

Automation Protocols Suite (APS)

Installing Protocols

Rev. A

March 22, 2001

Contents

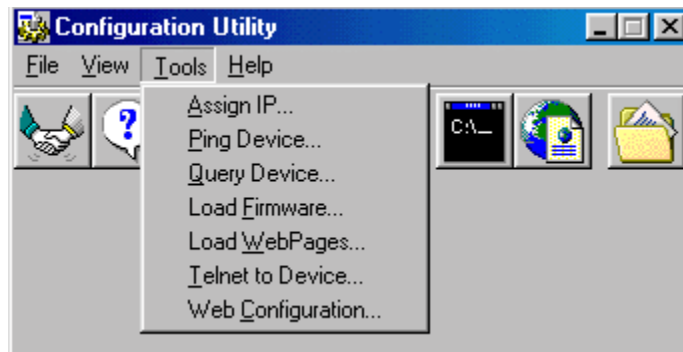
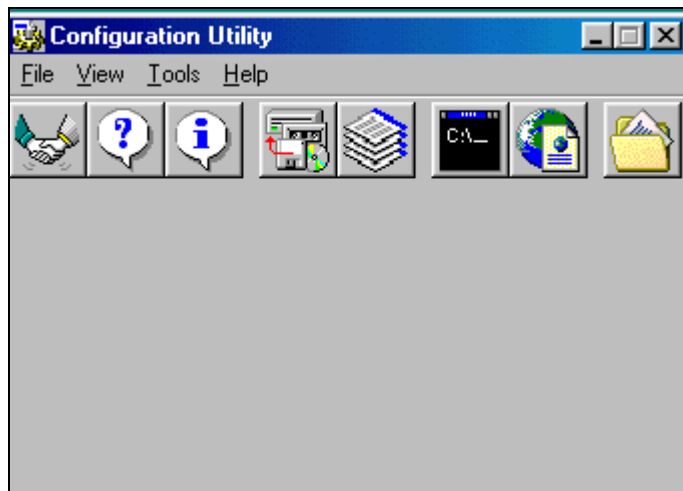
Installing a Protocol from the APS CD	1
Step 1: Access the Firmware	1
Step 2: Assign an IP Address	1
Step 3: Ping the Device Server	2
Step 4: Query the Device Server	3
Step 5: Load the Protocol	3
Telnet to the Device Server	4

Installing a Protocol from the APS CD

The Device Server comes with the Standard protocol installed. You can install another protocol by following these steps. If you later decide to re-install the Standard protocol, you can do so by this method.


Step 1: Access the Firmware

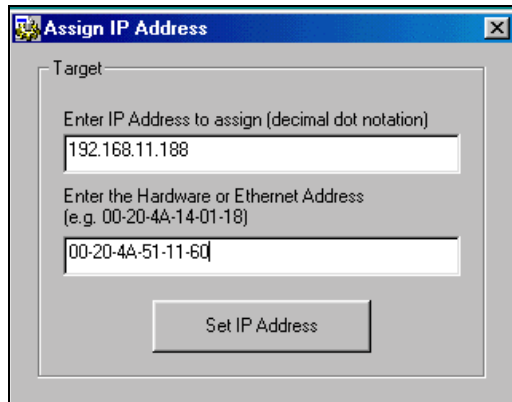
- 1 Insert the APS CD in the CD-ROM drive. The installation wizard begins to install the firmware.
- 2 Follow the prompts in the installation wizard. The Configuration Utility Window displays.



The icons on the toolbar and the Tools menu options perform the same actions.

Step 2: Assign an IP Address

- 1 Click the Assign IP icon  or select **Tools**→**Assign IP**. The Assign IP window displays.



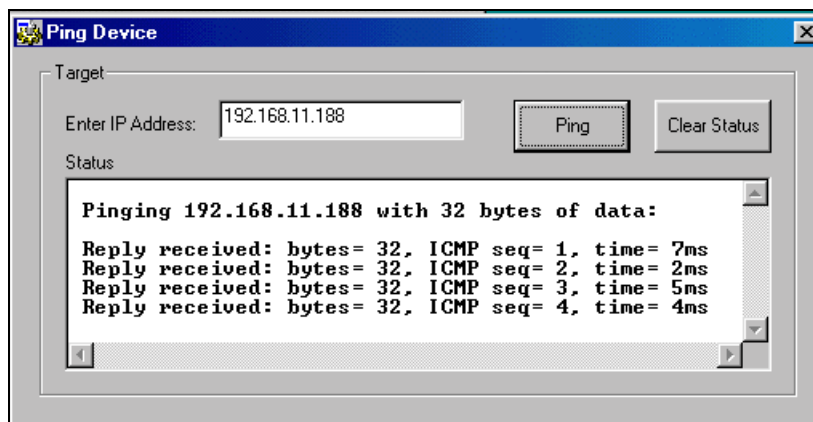
- 2 In the **Enter IP Address to assign** field, type the IP address of the Device Server (XXX.XXX.XXX.XXX format).
- 3 In the **Enter the Hardware or Ethernet Address field**, type the Ethernet address listed on the Device Server label (on the bottom). This is the MAC address.
- 4 Click the **Set IP Address** button. The Assign IP Successful message displays.
- 5 Click **OK**.

Step 3: Ping the Device Server

Ping the Device Server to make sure it has the assigned IP address.



- 1 Click the **Ping** icon or select **Tools**→**Ping Device**. The Ping Device window displays.



- 2 Click the **Ping** button. Four *Reply received* messages display in the window, indicating that the IP address is functioning.

Step 4: Query the Device Server



- 1 Click the **Device Info** icon or select **Tools→Query Device**. The Query Device window displays. The IP address displays at the top.

A screenshot of a Windows-style window titled "Query Device". The window has a blue title bar with a close button. It is divided into two main sections. The top section, labeled "Target", contains a text input field with "192.168.11.188" and a "Get Device Information" button below it. The bottom section, labeled "Device Information", contains four text input fields: "Hardware Address" with "00-20-44-51-11-60", "Firmware Version" with "1.2", "Firmware Type" with "AD", and "Device Type" with "one port (DinRail, Mini)". A "Save Data in File" button is located at the bottom of the window.

- 2 Click the **Get Device Information** button. The Device Information fields display information. **Firmware Type** indicates the protocol that is currently loaded on the device.
- 3 If you want to save the information in a log, click the **Save Data in File** button.

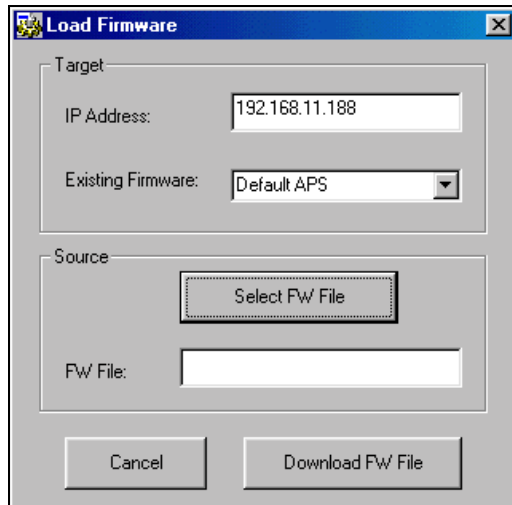


To view the log, click the **Data** icon.

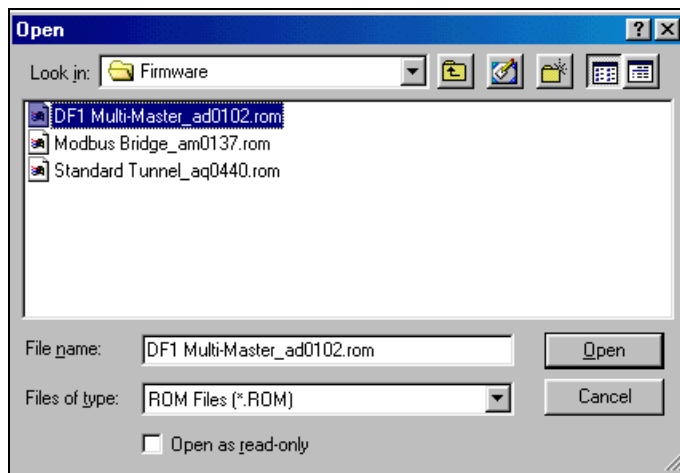
Step 5: Load the Protocol



- 1 Click the **Load** icon or select **Tools→Load Firmware**. The Load Firmware window displays.



- 2 Click **Select FW File**. A list of firmware files displays.



- 3 Select the desired protocol and click **Open**. The selected file displays in the FW File field.
- 4 Click **Download FW File**. The *File download successful* message displays.
- 5 Click **OK**.

Note: If desired, run another query to confirm that the protocol has been installed.

Telnet to the Device Server

To view or update the Device Server configuration, you first open a Telnet connection.



- 1 Click the **Telnet** icon or select **Tools** → **Telnet to Device**. The Configuration Set-Up window for the protocol displays.
- 2 Continue with the appropriate configuration procedure for the protocol you installed.