

EPS Installation Guide

For EPS1 and EPS2 Ethernet Print Servers



The information in this guide may change without notice. The manufacturer assumes no responsibility for any errors which may appear in this guide.

AppleTalk, Chooser, and Macintosh are trademarks of Apple Computer Corporation. LaserJet and Bitronics are trademarks of Hewlett Packard. Centronics is a registered trademark of Centronics Data Computer Corporation. PostScript is a trademark of Adobe Systems, Inc. DEC and LAT are trademarks of Digital Equipment Corporation. Ethernet is a trademark of XEROX Corporation. NetWare is a trademark of Novell Corporation. UNIX is a registered trademark of The Open Group. Windows for Workgroups, Windows 95, Windows 98, Windows 2000, and Windows NT are trademarks of Microsoft Corporation.

Copyright 2000, Lantronix. All rights reserved. No part of the contents of this book may be transmitted or reproduced in any form or by any means without the written permission of Lantronix. Printed in the United States of America.

The revision date for this manual is **26 June, 2001**

Part Number: 900-201A
Rev. B

WARNING

This product has been designed to comply with the limits for a Class A digital device pursuant to Part 15 of FCC Rules. These limits are designed to provide reasonable protection against such interference when operating in a commercial environment. This equipment generates, uses, and can radiate radio frequency energy, and if not installed and used in accordance with this guide, may cause harmful interference to radio communications.

Operation of this equipment in a residential area is likely to cause interference in which case the user, at his or her own expense, will be required to take whatever measures may be required to correct the interference.

Changes or modifications to this device not explicitly approved by Lantronix will void the user's authority to operate this device.

Cet appareil doit se soumettre avec la section 15 des statuts et règlements de FCC. Le fonctionnement est subjecté aux conditions suivantes:

- (1) Cet appareil ne doit pas causer une interférence malfaisante.
- (2) Cet appareil doit accepter n'importe quelle interférence reçue qui peut causer une opération indésirable.



Contents

1: Introduction	1-1
1.1 How to Use This Manual.....	1-1
2: Installation	2-1
2.1 EPS1/2 Product Description.....	2-1
2.2 Installing the EPS.....	2-3
3: Getting Started	3-1
3.1 Configuration Methods.....	3-1
3.1.1 EZWebCon.....	3-1
3.1.2 Incoming Logins.....	3-1
3.1.3 Console Terminal.....	3-2
3.2 Services.....	3-2
4: TCP/IP Configuration	4-1
4.1 Setting the IP Address.....	4-1
4.1.1 Using EZWebCon.....	4-1
4.1.2 Using a Directed Ping Packet.....	4-1
4.1.3 Using a BOOTP, DHCP, or RARP Reply.....	4-3
4.1.4 Using the Command Line Interface.....	4-3
4.2 LPR Printing.....	4-3
4.2.1 LPR on Windows NT 3.5.1 (and later).....	4-4
4.2.2 LPR on Windows 95/98.....	4-7
4.2.3 LPR on UNIX Hosts.....	4-7
4.2.4 LPR on AIX Hosts.....	4-8
4.2.5 LPR on HP Hosts.....	4-9
4.2.6 LPR on SCO UNIX Hosts.....	4-10
4.2.7 RTEL Functionality.....	4-11
4.3 Unix Host Troubleshooting.....	4-12
5: NetWare Configuration	5-1
5.1 NDPS Printing.....	5-1
5.2 NDS Print Queues.....	5-1
5.2.1 Obtain an NDS License.....	5-1
5.2.2 Configure your EPS.....	5-2
5.3 NetWare Administrator Quick Setup Print Queues.....	5-2

5.4 PCONSOLE Print Queues	5-3
5.5 NetWare Host Troubleshooting	5-4
6: LAT Configuration	6-1
6.1 Printing Directly to a Port	6-1
6.2 LAT Host Troubleshooting	6-2
7: AppleTalk Configuration	7-1
7.1 Bitronics	7-1
7.2 Macintosh Services	7-1
7.3 AppleTalk Zones	7-1
7.4 AppleTalk Host Troubleshooting	7-2
8: DLC Configuration for LAN Manager	8-1
8.1 DLC Configuration	8-1
8.1.1 EPS Configuration	8-1
8.1.2 Host Configuration	8-1
A: Contact Information	A-1
A.1 Problem Report Procedure	A-1
A.2 Full Contact Information	A-1
B: Troubleshooting	B-1
B.1 Power-up Troubleshooting	B-1
B.2 DHCP Troubleshooting	B-3
B.3 BOOTP Troubleshooting	B-4
B.4 RARP Troubleshooting	B-4
B.5 Printing Problems	B-5
B.6 Entering Commands at the Boot Prompt	B-6
C: Pinouts	C-1
C.1 Ethernet Connector	C-1
C.2 Parallel Connectors	C-1
D: Updating Software	D-1
D.1 Obtaining Software	D-1
D.2 Reloading Software	D-2
D.3 Troubleshooting Flash ROM Updates	D-4

E: SpecificationsE-1
 E.1 Power Information E-1
 E.2 Environmental Limitations..... E-1

F: Frequently-used Commands F-1
 F.1 Conventions..... F-1
 F.2 Server Commands F-2
 F.3 Port Commands F-5
 F.4 Protocol Commands F-7

Warranty Statement

Declaration of Conformity

Index



1: Introduction

The Lantronix EPSs (EPS1 and EPS2) are ethernet print servers that provide shared network access to printers for a variety of network protocols and operating systems. The print servers support the TCP/IP, IPX (NetWare), Local Area Transport (LAT), AppleTalk (EtherTalk), and Microsoft LAN Manager protocols. They can queue multiple pending jobs and service those jobs in the order in which they are received from hosts.

Note: *In this manual, all EPS servers will be referred to as “the EPS” unless a distinction needs to be made between models.*

The EPS stores its executable software in Flash (rewritable) ROM, meaning that it does not have to download software from a host each time it boots. Software must only be downloaded when a new software version becomes available. See *Appendix D* for more information.

1.1 How to Use This Manual

This guide is structured as follows:

- ◆ Chapter 2, *Installation* explains how to physically install the EPS.
- ◆ Chapter 3, *Getting Started* explains the minimum configuration needed.
- ◆ Chapters 4 through 8 cover protocol-specific setup needed to install print queues and otherwise use the EPS.
 - Chapter 4, *TCP/IP Configuration*
 - Chapter 5, *NetWare Configuration*
 - Chapter 6, *LAT Configuration*
 - Chapter 7, *AppleTalk Configuration*
 - Chapter 8, *DLC Configuration for LAN Manager*
- ◆ Appendices A through F provide supplementary information.
 - Appendix A, *Contact Information*
 - Appendix B, *Troubleshooting*
 - Appendix C, *Pinouts*
 - Appendix D, *Updating Software*
 - Appendix E, *Specifications*

- Appendix F, *Frequently-used Commands*

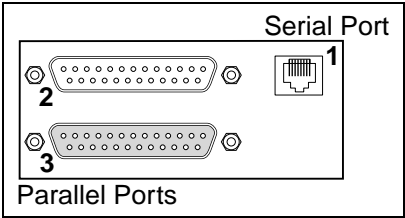
Read chapters 2 through 4 in order, then proceed to the protocol-specific chapter that relates to your network. Refer to Appendix F as needed. The *Print Server Reference Manual*, located on the CD-ROM and web site, provides additional information about configuring and using your EPS.

2: Installation

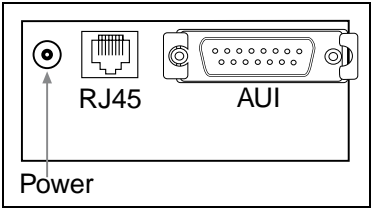
This chapter describes the various EPS models and shows how to install them into a basic network situation.

2.1 EPS1/2 Product Description

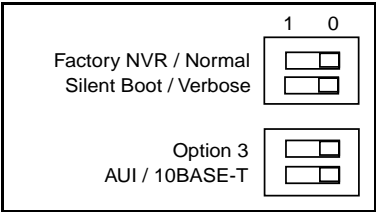
The front panel of the EPS has an RJ45 serial connector and either one (EPS1) or two (EPS2) DB25 parallel connectors. The port names are Port_1 (serial), Port_2 (top parallel), and Port_3 (bottom parallel, EPS2 only).



The back panel of the EPS has a power connector, an RJ45 Ethernet connector for 10BASE-T, and an AUI Ethernet connector.



The bottom of the EPS has a label noting the unit's Ethernet address, needed for configuration, and 4 DIP switches (explained in the *Installation* section).



The default name of the EPS is **EPS_XXXXXX**, where **XXXXXX** denotes the last 6 digits of its Ethernet address.

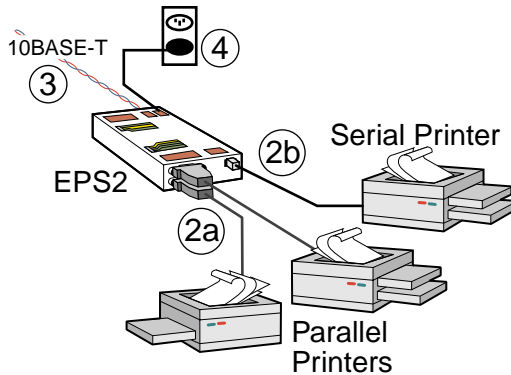
The top panel of the EPS has 7 LEDs. Table 2-1 explains their functions during normal operation.

Table 2-1: LED Functionality

LED	Function During Normal Operation
PWR	Lights solid green to indicate that the unit has power.
POLARITY	Lights solid yellow to indicate that the 10BASE-T cable is swapped.
GOOD LINK	Lights solid green to indicate a working Ethernet connection (either 10BASE-T or 10BASE2).
OK	Lights green (blinks occasionally) to indicate the unit is functioning properly.
NETWORK	Blinks yellow to indicate Ethernet activity.
PARALLEL	Blinks yellow to indicate parallel port activity.
SERIAL	Blinks yellow to indicate serial port activity.

2.2 Installing the EPS

The following diagram shows a properly-installed EPS:



To install the EPS, complete the following steps in order. Refer to the numbers in the figure for help.

- 1 Set the DIP switches on the bottom of the unit. Their functions are explained in Table 2-2.

Table 2-2: DIP Switch Functions

Switch	Position 1	Position 0 (default)
1	Factory NVR: EPS is restored to factory defaults at power-up.	Normal: Saved EPS settings are used at power-up.
2	Silent Boot: The EPS does not print any status information unless it cannot boot.	Verbose Boot: The EPS prints boot status and PostScript-compatible test jobs to the serial and parallel ports during the boot sequence. (Recommended for first-time setup)
3	Unused	Unused
4	AUI: The EPS uses the AUI network interface.	10BASE-T: The EPS uses the 10BASE-T Ethernet interface.

Note: *Switches are only checked at power-up. Changing them while the unit is operating will have no effect.*

- 2 Connect at least one printer to the EPS using an available serial or parallel port.

- 3 Attach the EPS to the network using a 10BASE-T cable, transceiver, or AUI cable.

The EPS must have one and only one valid Ethernet connection in order to boot properly. Use switch 4 to set the correct Ethernet connection type. To boot the EPS without attaching it to the network, attach a terminated MAU to the AUI port or connect the 10BASE-T port to a disabled hub port.

- 4 Attach one end of the power cable to the EPS; plug the other end into an electrical outlet. Power will come on automatically.
- 5 Allow 45 seconds for the EPS to fully boot.
 - It will run through a set of power-up diagnostics for approximately 12 seconds. The 4 LEDs will show varying patterns corresponding to the test being run.
 - It will try to obtain configuration information via DHCP, BOOTP, and RARP. This step could last approximately 15 seconds if no hosts answer the requests. The OK LED will blink approximately 3 times per second, and the NETWORK LED will blink occasionally as network requests are transmitted.
 - It will determine if the code in its Flash is valid. If so, it will load the code and begin normal execution. If not, the EPS will have to download software. See *Appendix D* for more information.
- 6 If you have set DIP switch 2 to Verbose (the default), check the status page that prints when the unit boots.

Note: *If the Test page or status page does not print, refer to Appendix B.*

3: Getting Started

It is important to consider the following points before logging into and configuring the EPS:

- ◆ You must configure the EPS IP address before any TCP/IP functionality is available. (See *Setting the IP Address* on page 4-1) You cannot use the ThinWeb Manager until you have configured an IP address.
- ◆ Changing any server, service, or port setting requires privileged user status. The default privileged password is **system**.
- ◆ The login password is required for remote console logins. The default login password is **access**.

Note: *If you would like to change either the privileged or login password, either use EZWebCon or refer to the Print Server Reference Manual located on the CD-ROM.*

3.1 Configuration Methods

3.1.1 EZWebCon

The EZWebCon configuration software is the recommended way to configure the EPS. EZWebCon's graphical user interface guides first time users through the initial configuration process and allows experienced users to update any configurable parameters.

EZWebCon requires a Java Virtual Machine (JVM) on the client. Lantronix provides JVM installers for Solaris and 32-bit Windows users, as well as source code and instructions for compiling it for other systems.

The EZWebCon software is located on the distribution CD-ROM. All instructions for installing EZWebCon are provided in the README file. For assistance once EZWebCon is running, refer to the EZWebCon on-line help.

Note: *EZWebCon is also available from the Lantronix website and FTP server. See Appendix D for more information.*

3.1.2 Incoming Logins

You can log in via EZWebCon to configure the EPS. you can also use incoming LAT and TCP/IP logins.

Incoming Telnet is only possible if your EPS has an IP address configured. Incoming Telnet is enabled by default to allow TCP/IP connections. To change this setting, use the **Define Server Incoming** command described in the *Command Reference* chapter of the *Print Server Reference Manual* located on the CD-ROM.

Incoming logins do not prompt for a login password, so you may wish to disable them for security reasons. If it is undesirable to disable incoming logins, the EPS can be configured to prompt for a password with the **Define Server Incoming Password Enabled** command.

3.1.3 Console Terminal

To configure the EPS via a console terminal, attach a terminal to the serial port and press the **Return** key. You will see a Local> prompt at which you can enter configuration commands.

3.2 Services

With few exceptions, you must create a service before you can configure print queues on the EPS. A service is a resource accessible to network hosts. A Lantronix service is also known as a **remote printer** name or **remote queue** name on many operating systems.

The EPS offers one login service and one default service per port. The service names are:

EPS_XXXXXX	Login service
EPS_XXXXXX_S1	Serial port (Port_1) service
EPS_XXXXXX_P1	Parallel port (Port_2) service
EPS_XXXXXX_P2	Parallel port (Port_2) service, EPS2 only

The default service names are based on the server name; therefore the server name must be no more than 13 characters. If you change the server name, the service names will change as well. For example, changing the server name from EPS_XXXXXX to BIOLAB will change the service names to BIOLAB_TEXTS1 and so on.

The default serial port services have the TCP/IP, NetWare, LAN Manager, and AppleTalk protocols enabled. Parallel port services have TCP/IP, NetWare, and LAN Manager enabled. LAT is disabled by default on all services provided by the EPS because many network managers object to the frequent LAT service announcements. AppleTalk is disabled on parallel port services because AppleTalk requires Bitronics mode, which is disabled by default.

If you need to modify a default service, see the *Server Configuration* chapter of the *Print Server Reference Manual* located on the CD-ROM.

4: TCP/IP Configuration

The EZWebCon configuration software is the easiest way to configure the EPS. The following sections cover IP address configuration and print configuration methods for TCP/IP hosts.

4.1 Setting the IP Address

The EPS IP address must be configured before any TCP/IP functionality is available. Use one of the following methods to set the IP address: EZWebCon; a directed Ping packet; a BOOTP, DHCP, or RARP reply; or commands entered via the command line interface.

4.1.1 Using EZWebCon

Use the following steps to assign an IP address using the EZWebCon Expert Shell.

- 1 From the **Action** menu, select **Assign IP Address**.
- 2 Enter or change the IP-related settings:
 - A For **Ethernet Address**, enter the number that appears on the bottom label of your EPS.
 - B For **IP Address**, enter the desired IP address to use for this EPS.
 - C For **Subnet Mask**, change the values provided only if you wish to use a mask other than the default. The default value should be correct in most cases.
 - D For **Loadhost**, enter the IP address of the loadhost where you intend to store your operating code and SDK files (if used).
- 3 Click **OK**.
- 4 Reboot the EPS. EZWebCon will let you know whether the configuration was successful.

Note: *If you have an older version of EZWebCon, refer to the Readme that was included with it.*

4.1.2 Using a Directed Ping Packet

The ARP/ping method is available under UNIX and Windows-based systems. If the EPS has no IP address, it will set its address from the first directed IP packet it receives.

On a **UNIX** host, create an entry in the host's ARP table and substitute the intended IP address and the hardware address of the EPS, then ping the EPS. This process typically requires superuser privileges.

Figure 4-1: ARP and Ping on UNIX

```
# arp -s 192.0.1.228 00-80-a3-xx-xx-xx
% ping 192.0.1.228
```

In order for the ARP command to work on **Windows**, the ARP table on the PC must have at least one IP address defined other than its own. If the ARP table is empty, the command will return an error message. Type ARP -A at the DOS command prompt to verify that there is at least one entry in the ARP table.

Figure 4-2: ARP and Ping on Windows

```
C:\ ARP -S 192.0.1.228 00-80-A3-XX-XX-XX
C:\ PING 192.0.1.228
```

Note: *There should be replies from the IP address if the ARP command worked.*

When the EPS receives the ping packet, it will notice that its IP address is not set and will send out broadcasts to see if another node is using the specified address. If no duplicate is found, the EPS will use the IP address and will respond to the ping packet.

The EPS will not save the learned IP address permanently; this procedure is intended as a temporary measure to enable EZWebCon to communicate with the EPS, or allow an administrator to Telnet into the EPS. Once logged in, the administrator can enter the **Change IPaddress** command to make the address permanent.

Figure 4-3: Configuring Permanent IP Address

```
% telnet 192.0.1.228

Trying 192.0.1.228

Lantronix EPSx Version n.n/n (yyymmdd)
Type Help at the 'Local_>' prompt for assistance.

Enter Username> gopher
Local> SET PRIVILEGED
Password> system (not echoed)
Local>> DEFINE SERVER IPADDRESS 192.0.1.228
```

Any host wishing to access the EPS will have to be told the EPS's IP address. This is typically configured in the unix file **/etc/hosts** or via a nameserver. Refer to the host's documentation for additional information.

4.1.3 Using a BOOTP, DHCP, or RARP Reply

At boot time a host-based DHCP, BOOTP, or RARP server can respond to an EPS request for an available IP address. For information about configuring the DHCP, BOOTP, or RARP server, see your host documentation.

4.1.4 Using the Command Line Interface

- 1 Connect to the serial port (Port_1) using a console terminal or a terminal emulation program, and press **Return**. The serial port settings are 9600 baud, 8 bits, 1 stop bit, no parity.
- 2 Become the privileged user.

Figure 4-4: Becoming the Privileged User

```
Local> SET PRIVILEGED
Password> system (not echoed)
Local>>
```

- 3 Enter the new IP address.

Figure 4-5: Configuring the IP Address

```
Local>> define server ipaddress 192.0.1.201
```

4.2 LPR Printing

The EPS provides two major methods of printing via TCP/IP: Berkeley remote LPR and RTEL host software.

Two parameters **must** be configured for LPR printing:

- 1 The IP address or host name of the EPS.
- 2 The remote output queue (the name of the service on the EPS).

In addition, there are a few important things to note about LPR printing:

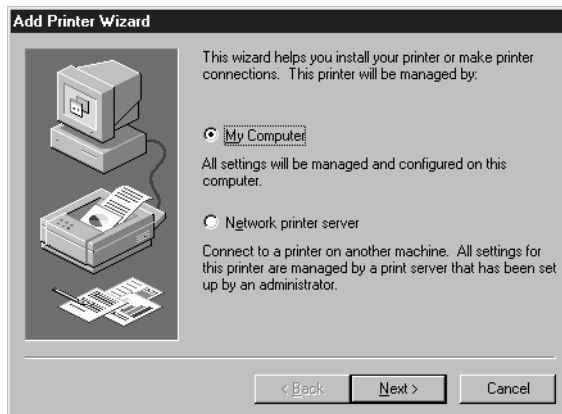
- ◆ Windows for Workgroups, Windows 95, and Windows 98 do not support LPR directly; however, Lantronix has provided a peer-to-peer printing solution on the distribution CD-ROM.
- ◆ Because of the way the LPR protocol is typically implemented on the host, the processing options and banner page are sent after the job data itself. The EPS will print a banner page at the end of a job, and cannot support most of the LPR options. If it is necessary to have the banner page at the beginning of the printout, install and use the RTEL software. If banners are not needed, they can be disabled.

- ◆ The EPS cannot print multiple copies of the print job when using the “-#n” lpr option.
- ◆ If two print queues on the host refer to two services on the same EPS, they must use separate spooling directories.
- ◆ No special purpose input or output filters can be used when printing via LPR. If this functionality is necessary, use the named pipe interface program in the RTEL print queue configuration software.

4.2.1 LPR on Windows NT 3.5.1 (and later)

This section assumes that TCP/IP, Simple TCP/IP, and Microsoft TCP/IP printing have been installed on the Windows NT host.

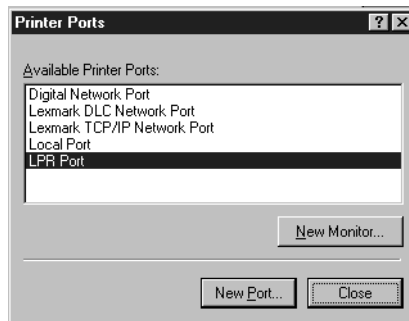
- 1 In the Control Panel, double-click the **Printers** icon.
- 2 Double-click the **Add Printer** icon.
- 3 In the window that appears, choose **My computer** and click **Next**.



- 4 Select the **Add Port** button and click **Next**.

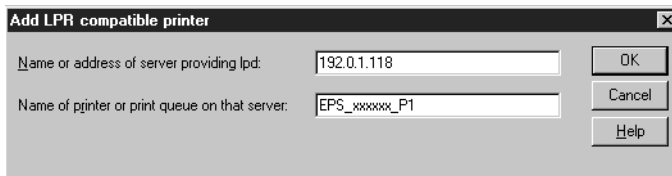


- 5 Select **LPR Port**.

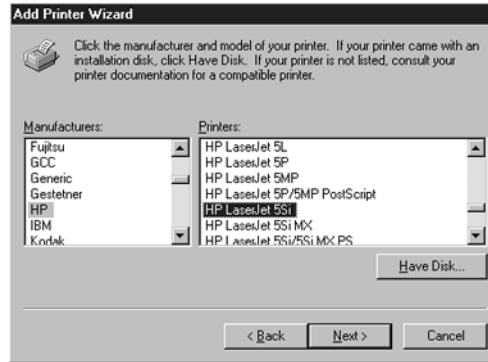


Note: *If LPR Port is not an option, open the Network Control Panel and add "Microsoft TCP/IP Printing" to the List of services.*

- 6 Enter the name or IP address of your EPS on the first line, and enter the name of your EPS print service on the second line.



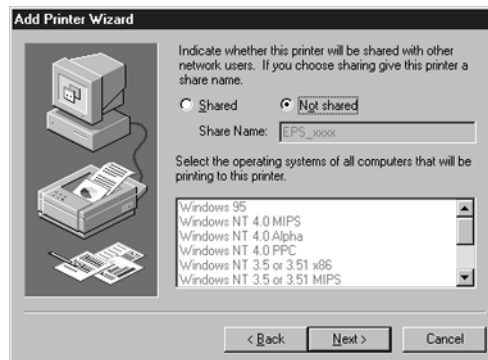
7 Select the manufacturer and printer type.



8 Enter the queue name.



9 If applicable, choose **Shared** and select the type of operating system that the printer will be working with. (First confirm that the print queue is working.)



- 10 Test the printer by choosing **Yes** and clicking **Finish**.



4.2.2 LPR on Windows 95/98

To enable LPR printing on Windows 95/98, you must download and install the *LPR for Windows 95/98* application from the Lantronix FTP site (ftp.lantronix.com).

- 1 On the FTP home page, click on **pub**.
- 2 Click on **lpr_win32**.
- 3 Download the file **ltxlpr.exe**.
- 4 Install the file **ltxlpr.exe**. Once installation is complete, a readme file will open automatically.
- 5 Follow the directions in the readme file to configure LPR on your PC.

4.2.3 LPR on UNIX Hosts

The Berkeley remote printing system is supported on many machines, and is simple to configure. This section describes how to configure LPR print queues on generic UNIX hosts such as SUN hosts. There are slight variations in LPR configuration for AIX, HP, and SCO hosts, as will be explained in the following sections.

- 1 Install a print queue on your host by adding the EPS name and IP address to the **/etc/hosts** file:

Figure 4-6: Adding /etc/hosts Entry

xxx . xxx . xxx . xxx	EPS_XXXXXXX
-----------------------	-------------

- 2 Add the host print queue to the `/etc/printcap` file. The punctuation shown in Figure 4-7 is required, and no extra spaces should be added.

Figure 4-7: Adding `/etc/printcap` Entry

```
eps_prt|Printer on LAB EPS:\
:rm=EPS_XXXXXX:\
:rp=EPS_XXXXXX_TEXT:\
:sd=/usr/spool/lpd/eps_prt:
```

This will create a host queue named `eps_prt`. The `rm` parameter is the name of the EPS in the host's address file, the `rp` parameter is the name of the service as it exists on the EPS, and the `sd` parameter specifies the name of a directory used to hold temporary spooling files.

- 3 Create a world-writable spooling directory using the `mkdir` command.

Figure 4-8: Creating Spooling Directory

```
# mkdir /usr/spool/lpd/eps_prt
# chmod 777 /usr/spool/lpd/eps_prt
```

- 4 If desired, use the `mx` option to allow unlimited size files to be printed and the `sh` option to prevent header pages from being generated. See the host's documentation or man pages for more information on the format of the printcap file and how to create the spool directory.
- 5 Print to the queue using normal `lpr` commands:

Figure 4-9: Printing to Queue

```
% lpr -Peps_prt /etc/hosts
```

4.2.4 LPR on AIX Hosts

The System Management Interface Tool (SMIT) allows you to enable LPD printing and create print queues. LPR has only been tested on AIX versions 3.2 and higher.

To create a print queue:

- 1 At the host prompt, type `smit`.
- 2 Choose **Print Spooling**.
- 3 Choose **Manage Print Server** and **Start the Print Server Subsystem (lpd daemon)**.
- 4 In the **Start the Print Server Subsystem** dialog box, type `both` in the first field.
- 5 The message "The lpd subsystem has been started" will appear. Click **Done**.

To add a print queue:

- 1 From the main window, choose **Print Spooling**.
 - 2 Choose **Manage Print Server** and **Manage Print Queues**.
 - 3 Choose **Add a print queue**.
 - 4 From the dialog box that appears, choose **remote**.
 - 5 From the next dialog box, choose **Remote Printing**.
 - 6 The **Add a Standard Remote Print Queue** dialog box will appear. Enter the following information.
 - The name of the print queue,
 - The name of the EPS unit,
 - The name of the EPS service,
 - The type of print spooler on the remote server, and
 - A description of the printer on the remote server.
 - 7 A dialog box will appear: “Added print queue **eps_prt**”. Click **Done**.
- Note:** *If you are unable to use SMIT, see the Print Server Reference Manual on the CD-ROM for UNIX commands used to set up print queues.*
- 8 Print to the queue using normal lp syntax.

Figure 4-10: Printing to Queue

```
% lp -deps_prt filename
```

4.2.5 LPR on HP Hosts

The System Administration Manager (SAM) allows you to create print queues.

Note: *If you are unable to use SAM, the Print Server Reference Manual located on the CD-ROM describes UNIX commands that can be used to set up print queues.*

To create a print queue:

- 1 At the HP prompt, type **sam**.
- 2 From the main application window, choose **Printers and Plotters**.
- 3 In the **Printers and Plotters** window, choose **Printers/Plotters**.
- 4 In the pull-down menu, select **Remote Printer/Plotter** from the **Actions** menu. 4-9

- 5 The **Add Remote Printer** window will appear. SAM will prompt you for:
 - The printer name (the name of the print queue),
 - The remote system name (the EPS name),
 - The remote printer name (the EPS service),
 - The remote cancel model, and
 - The remote status model.

4.2.6 LPR on SCO UNIX Hosts

LPR is supported in SCO V3.2 release 4 with TCP/IP Version 1.2 and greater.

To configure a print queue using LPR, issue the **mkdev rlp** command. This will install the Berkeley remote printing files and executable programs.

Note: *The **mkdev rlp** command should only be issued once, or serious problems will occur. If this happens, contact SCO technical support.*

You can print to this queue using normal lp syntax once the remote printer is set up. To create a remote printer:

- 1 Issue the **rlpconf** command.

- 2 Answer the questions that follow.

Figure 4-11: Configuring Remote Printer

```
Remote Printing Configuration
Enter information for remote printers or local printers accepting remote
printing requests
Please enter the printer name (q to quit): backupprinter
Is printer backupprinter a remote printer or a local printer? (r/l) r
Please enter the name of the remote host that backupprinter is attached
to: EPS_XXXXXX
The backupprinter is connected to host EPS_XXXXXX.
Is this correct? (y/n) y
Would you like this to be the sys.default printer? (y/n) y
Make sure your hostname appears in EPS_PRT's /etc/hosts.equiv or /
etc/hosts:lpd file.
Make sure backupprinter appears in /etc/printcap (in BSD format).
Make sure backupprinter has a spool directory on EPS_PRT.
Putting the printer in printer description file and creating spool direc-
tory... done
Updating LP information... done
```

In the example, the printer name is your EPS service name, and the remote host name is the name of your EPS as it is listed in your hosts file.

During initial configuration, the queue name must be the same as the remote printer name. However, you may change the queue name later by manually editing the printcap file.

4.2.7 RTEL Functionality

If the LPR method of printing is not adequate for an application (for example, if you need banners before jobs, or more flexibility), configure the Lantronix-supplied RTEL software on the host. After installing the software configuring the connections to the EPS, you can use normal UNIX print commands and queue utilities such as **lpc** and **lpstat**.

Note: *RTEL binaries are provided for many systems. Source code is also provided for use on non-supported systems.*

To print to the EPS using special formatting or using third-party software packages, you may have to create **print pipes** on the host. The RTEL software provides this functionality by providing a UNIX named-pipe interface.

To recreate the RTEL source files:

- 1 Copy the file **RTEL_SRC.TAR** in binary mode from the distribution CD-ROM to the UNIX host.
- 2 Untar the archive.
- 3 See the README files in the created directories that describe the contents of the RTEL distribution and man pages that describe the actual software functionality.

4.3 Unix Host Troubleshooting

Table 4-1: TCP Troubleshooting

Area to Check	Explanation
The EPS IP address and name are entered in the host file	Telnet to the EPS using the name in the host file and verify that the EPS name is resolvable and that the EPS is reachable via the network.
Jobs that appear in the host queue reach the EPS	From within the LPC administrative utility, enter these commands to clear and reset the host queue: abort <i>queue</i> clear <i>queue</i> enable <i>queue</i> start <i>queue</i>

5: NetWare Configuration

The EZWebCon configuration software is the easiest way to configure the EPS. The following sections cover print configuration methods for NetWare hosts.

Note: *The EPS needs an IP address before you can use EZWebCon. See Setting the IP Address on page 4-1 for instructions.*

This chapter explains creating NDS print queues with NetWare Administrator and with the PCONSOLE Quick Setup option. To create NDS print queues, you must be running NetWare version 4.x with NDS capabilities.

If you are running NetWare versions 2.x, 3.x, or version 4.x with bindery emulation, you may configure bindery print queues using QINST (bindery only) or PCONSOLE. For more information, see the *NetWare* chapter of the *Print Server Reference Manual* located on the CD-ROM.

5.1 NDPS Printing

Lantronix Terminal and Print Servers support Novell's NDPS for printing using the Novell NDPS Gateway. For instruction on setting up NDPS, refer to your Novell documentation. Lantronix also provides information on setting up NDPS in our FAQs on our support web site (<http://www.lantronix.com/support/>).

5.2 NDS Print Queues

5.2.1 Obtain an NDS License

If you wish to create NDS print queues, you must read and complete an NDS registration form via one of the following methods:

- ◆ Using a forms-capable Internet browser, navigate to the Lantronix World Wide Web site (www.lantronix.com), go to the Technical Support section, and find the **Novell NDS Registration** link.
- ◆ Send email to support@lantronix.com. You will receive a blank registration form that can be completed and returned to Lantronix.
- ◆ If you don't have Internet access, contact a Lantronix technical support representative for assistance. Contact information is provided in *Appendix A*.

5.2.2 Configure your EPS

- 1 License NDS on your EPS using the string obtained from Lantronix.

Figure 5-1: Licensing NDS

```
Local>> DEFINE PROTOCOL NETWARE DSLICENSE licensestring
```

- 2 Define the directory service tree in which the EPS is located.

Figure 5-2: Defining Directory Service Tree

```
Local>> DEFINE PROTOCOL NETWARE DSTREE foodco
```

Note: *For an explanation of the structure of the NetWare Directory Service tree, see your host documentation.*

- 3 Define the directory service context in which the EPS is located.

Figure 5-3: Defining Directory Service Context

```
Local>> DEFINE PROTOCOL NETWARE DSCONTEXT ou=kiwi.ou=exotic.o=fruit
```

- 4 Enter the **List Protocol NetWare Access** command to ensure that at least one of the file servers in the directory service tree is in the access list.
- 5 If desired file server is not in the access list, add it.

Figure 5-4: Defining Access List

```
Local>> DEFINE PROTOCOL NETWARE ACCESS fileserver
```

- 6 Reboot the EPS.

Figure 5-5: Rebooting

```
Local>> INITIALIZE DELAY 0
```

5.3 NetWare Administrator Quick Setup Print Queues

The NetWare Administrator management utility allows you to manage network resources, such as queue-based print services, in a tree structure. You can either use the Quick Setup option or individually create printing-related objects.

Note: *NetWare Administrator can be used for both NDS and bindery print queues.*

To create a print queue with the Quick Setup option:

- 1 Start the NetWare Administrator.
- 2 In the **Directory Tree** windows, select the context in which to install the printer.
- 3 From the Menu Bar, select **Tools: Print Services Quick Setup**.
- 4 In the **Print Server Name** field, enter the name of your EPS (viewable by entering the **Show Server** command at the Local> prompt).
- 5 In the **Printer Name** field, enter the name of the desired print **service** configured on your EPS. For example, EPS_XXXXXX_.
- 6 In the **Print Queue Name** field, enter the name of the print queue to create. The name should be meaningful to you; it will not affect EPS configuration.
- 7 Click **Create**.
- 8 Reboot the EPS.

5.4 PCONSOLE Print Queues

- 1 Log in as Admin on the file server you will be changing.
- 2 At the prompt, type **PCONSOLE** to start the utility.

For example, if your file server is mapped to the F: drive, you would use the **F:** prompt.

- 3 From the main menu, choose **Quick Set-Up**.
- 4 When prompted by PCONSOLE, enter the information with which to configure the print queue.
 - The print server name (EPS_XXXXX),
 - The new printer name (service name, such as EPS_XXXXX_),
 - The new print queue name, and
 - The print queue volume (the name of the file server from which the printer receives print requests).

The remaining fields can be left in their default settings.

- 5 Press the **F10** key to save the print queue information.
- 6 Reboot the EPS.

5.5 NetWare Host Troubleshooting

Table 5-1: NetWare Host Troubleshooting (Bindery Mode)

Area to Check	Explanation
The print server names in PCONSOLE match the EPS name and its service name	Use PCONSOLE to check.
The EPS NetWare access table	Use the Show Protocols NetWare Access command. Scanning too many file servers can cause a delay between jobs. Configure the access list to only scan for jobs on the file servers of interest.

Table 5-2: NetWare Host Troubleshooting (NDS)

Area to Check	Explanation
The EPS NetWare access table	Use the Show Protocols NetWare Access command. By default, only local file servers are scanned for queues.
The EPS login password and the queue password on the file server	The passwords must match or the EPS will not be able to log into the file servers to scan for jobs.
The EPS has successfully attached to the queue	Type NETSTAT at the Local> prompt. This will display information about file servers, printers, and queues that the EPS has found. If a queue is in JobPoll, the EPS has successfully attached to the queue.
The DSTree, DSContext, and DSLicense	Type Show Protocol NetWare NDS . This command shows the tree and the context that you have configured, a failure code, and an NDS error code for each server. DSTree is the directory service tree on which the EPS is located. DSContext is the context where the EPS is located; it must match the context on the file server (The DSContext must be of the following form: ou=fruit.o=exotic). DSLicensed should be yes .
Printer and queue changes have propagated through the NDS tree	It may take a few minutes for the changes to propagate. If the EPS doesn't attach, reboot the EPS.

Table 5-3: NDS Errors from the File Server

Code	Meaning	Remedy
0xffffda7	Object could not be found in the given context	Check the EPS server name, DScontext, and DStree to ensure the printer server is set up correctly with PCONSOLE.
0xffffda5	Requested attribute could not be found	Use PCONSOLE to ensure that the EPS has associated printers and the printers have associated queues.
0xffffd69	DS Database is locked	An administrator is probably updating the database. Wait a few minutes and issue the Set Protocol NetWare Reset command.
0xffffd63	Invalid password	The password for the print server object under PCONSOLE must match the EPS login password. If the login password on the EPS is left as the default (access), there should be no password for the print server object.
0xffffd54	Secure NCP violation	Turn down the NCP packet signature level so that it is not required.

Table 5-4: NDS Printing Errors

Bit	Meaning	Remedy
1	Server out of memory	Turn the EPS off, wait a few seconds, and turn it back on. Disable unused protocols and/or remove file servers without print queues from the NetWare access list.
2, 3	Unexpected response from file server	Report the problem to Lantronix Technical Support.
4	No printers found for the EPS	Ensure that there are printers for the EPS, and the printer names match the service names on the EPS.
5	No printer queue found	Ensure that the printers have associated queues.
6	Login failed	Ensure there is a print server object configured with the same name as the EPS.
7	Authentication failed	Ensure the EPS login password is the same as the print server object password. If the EPS is using the default password (access), there should be no print server object password.
8	Server cannot attach to queue	Check the NDS partitions, replicas, and volumes to ensure the file server where the queue lives has the correct information.



6: LAT Configuration

The EZWebCon configuration software is the easiest way to configure the EPS. The following sections cover print configuration methods for LAT hosts.

Note: *The EPS needs an IP address before you can use EZWebCon. See Setting the IP Address on page 4-1 for instructions.*

LAT print queues can be created by printing to a port or printing to a service. Printing directly to a port requires no EPS configuration.

Note: *Printing directly to a port is the easiest method for printing to the EPS. If you would like instructions for printing to a service, see the Print Server Reference Manual located on the CD-ROM.*

6.1 Printing Directly to a Port

- 1 Create a LAT application port that references the EPS port.

Figure 6-1: Creating LAT Application Port

```
$ RUN SYS$SYSTEM:LATCP
LATCP> CREATE PORT LTAnnn/APPLICATION
LATCP> SET PORT LTAnnn/NODE=EPS_XXXXXX/PORT=Port_n
LATCP> EXIT
```

- 2 Create and start a print queue that uses the LAT application port.

Figure 6-2: Creating and Starting Print Queue

```
$ INITIALIZE/QUEUE/START/ON=LTAnnn:/PROCESSOR=LATSYM
/RETAIN=ERROR queue_name
```

- 3 Add the commands to the SYS\$MANAGER:LAT\$STARTUP.COM file so the required LAT devices will be recreated after each host reboot.

Note: *LAT terminal device characteristics may have to be changed to correctly print certain files. See your VMS documentation for more information.*

- 4 Print to the queue.

Figure 6-3: Printing to Queue

```
$ PRINT/QUEUE=queue_name filename.txt
```

6.2 LAT Host Troubleshooting

By default, the LAT error message codes on the host are not translated into text error messages. If a LAT job fails and appears in the queue with an eight-digit hex result code, the code can be translated by issuing the following commands:

Figure 6-4: Translating LAT Error Codes

```
$ SHOW QUEUE/FULL/ALL queue_name
(note the error code nnnnnnnn)
$ SET MESSAGE SYS$MESSAGE:NETWRKMSG.EXE
$ EXIT %Xnnnnnnnn
```

Table 6-1: Troubleshooting LAT Configurations Using a Port

Area to check	Explanation
The specified node name matches the EPS node name	Use the Show Server command to verify.
The specified port name matches the port's name	Use the List Port 1 command to verify.

7: AppleTalk Configuration

The EZWebCon configuration software is the easiest way to configure the EPS. The following sections cover print configuration methods for AppleTalk hosts.

Note: *The EPS needs an IP address before you can use EZWebCon. See Setting the IP Address on page 4-1 for instructions.*

Note: *Macintoshes that do not support EtherTalk will need either an Ethernet card or a LocalTalk-to-EtherTalk router to use the EPS.*

7.1 Bitronics

Printing from a Macintosh is only possible with a PostScript printer and bi-directional communication between the EPS and that printer. The EPS supports the Bitronics interface, an extension to the standard Centronics interface. Printers that support Bitronics allow bi-directional communication. To enable Bitronics on an EPS port, use the **Define Port n Bitronics Enabled** command.

Note: *MacOS 8.1 can also print via LPD. See the Print Server Reference Manual located on the CD-ROM and web site for configuration instructions.*

7.2 Macintosh Services

Before attempting to print from a Macintosh, ensure that AppleTalk and PostScript are both enabled on at least one service. Once a PostScript AppleTalk service is configured, the service will appear in the Chooser as a LaserWriter in the same zone as the EPS. Select the service in the Chooser and complete the appropriate setup options. Then close the Chooser window and print a test page of text to the Macintosh service.

7.3 AppleTalk Zones

If there is a router on the network, the EPS will appear in the default zone specified by the router. To change the default zone use the **Define Protocol AppleTalk Zone** command.

If the EPS is attached to a network without an AppleTalk router, all AppleTalk devices (including the EPS) will appear in the default zone in the Chooser.

Note: *If no router is present on the network, the EPS will not accept AppleTalk print jobs for 60 seconds after booting.*

7.4 AppleTalk Host Troubleshooting

Table 7-1: AppleTalk Host Troubleshooting

Area to Check	Explanation
The printer is available to be selected in the Chooser	Make sure the printer is in the right zone.
Bidirectional communication	Lock the printer in PostScript mode and issue the Test Service PostScript Count n command. This sends a job to the printer and waits for the response.

8: DLC Configuration for LAN Manager

The EZWebCon configuration software is the easiest way to configure the EPS. This chapter explains DLC/Digital Network Port configuration for Windows NT 4.x hosts.

Note: *The Server needs an IP address before you can use EZWebCon. See Setting the IP Address on page 4-1 for instructions.*

Printing using an LPD client is the preferred method for sending print jobs to the EPS. Windows 95 does not support DLC printing (see *Chapter 4* for more information).

8.1 DLC Configuration

8.1.1 EPS Configuration

To use the DLC protocol, you must have one service with the DLC characteristic enabled. The DLC characteristic may be associated with only one service on a given EPS.

Figure 8-1: Enabling DLC

```
Local>> DEFINE SERVICE EPS_XXXXXX_P1 DLC ENABLED
```

8.1.2 Host Configuration

To send print jobs from a Windows NT host to the EPS, add the EPS as a Windows NT printer.

- 1 Double-click the **Printers** icon in the Control Panel.
- 2 Double-click the **Add Printer** icon.
- 3 In the window that appears, select **My Computer** and click **Next**.
- 4 Select the **Add Port** button.
- 5 Select **Hewlett-Packard Network Port** and click **New Port**.

If Hewlett-Packard port is not one of the available options, you must install DLC printing from your Windows NT system disks. DLC is not installed by default.

- 6 Enter the EPS hardware address. It is printed on the EPS bottom label.

- 7** Select **Job-based**.
- 8** Select the manufacturer and printer type.
- 9** Enter the queue name.
- 10** If applicable, choose **Shared** and select the operating system the printer will be working with. (First confirm that the print queue is working.)
- 11** Test the printer.

A: Contact Information

If you are experiencing an error that is not listed in Appendix B: or if you are unable to fix the error, contact your dealer or Lantronix Technical Support at 800-422-7044 (US) or 949-453-3990. Technical Support is also available via Internet email at support@lantronix.com.

A.1 Problem Report Procedure

When you report a problem, please provide the following information:

- ◆ Your name, and your company name, address, and phone number
- ◆ Lantronix EPS model number
- ◆ Lantronix EPS serial number
- ◆ Software version (use the **Show Server** command to display)
- ◆ Network configuration, including the information from a **Netstat** command
- ◆ Description of the problem
- ◆ Debug report (stack dump), if applicable
- ◆ Status of the unit when the problem occurred (please try to include information on user and network activity at the time of the problem)

A.2 Full Contact Information

Address: 15353 Barranca Parkway, Irvine, CA 92618 USA

Phone: 949/453-3990

Fax: 949/453-3995

World Wide Web: <http://www.lantronix.com>

North American Direct Sales: 800/422-7055

North American Reseller Sales: 800/422-7015

North American Sales Fax: 949/450-7232

Internet: sales@lantronix.com

International Sales: 949/450-7227

International Sales Fax: 949/450-7231

Internet: intsales@lantronix.com

Technical Support: 800/422-7044 or 949/453-3990

Technical Support Fax: 949/450-7226

Internet: support@lantronix.com



B: Troubleshooting

This Appendix discusses how to diagnose and fix errors quickly yourself without having to contact a dealer or Lantronix. It will help to connect a terminal to the serial port while diagnosing an error to view any summary messages that are displayed.

When troubleshooting, always ensure that the physical connections (power cable, network cable, and serial cable) are secure. If you have trouble with wireless networking, it may help to connect the EPS to a wired Ethernet network to verify that it is working properly and to check the wireless settings.

Note: *Some unexplained errors may be caused by duplicate IP addresses on the network. Make sure that your EPS IP address is unique.*

B.1 Power-up Troubleshooting

There are several possible error situations if the LEDs do not flash.

Table B-1: Error Messages

Message	Diagnosis/Remedy
Power-up diagnostic failure (hardware failure)	Note which LED is blinking and its color, then contact your dealer or Lantronix Technical Support.
The EPS boots but does not try to load the Flash ROM code	Set DIP switch 4 to Verbose mode. A brief description of the problem will be queued to the parallel port and printed.
Network Error: The ACT LED will blink yellow 2-3 times per second	A. Make sure the Ethernet network cable is properly connected and reboot the EPS. B. If option A fails to resolve the problem, reload Flash ROM. Refer to Appendix D.

Problem situations and error messages are listed in Table B-2. If you cannot find an explanation for your problem, try to match it to one of the other errors. If you cannot remedy the problem, contact your dealer or Lantronix Technical Support.

Table B-2: Power-up Problems and Error Messages

Problem/Message	Error	Remedy
The EPS is connected to a power source, but there is no LED activity.	The unit or its power supply is damaged.	Contact your dealer or Lantronix Technical Support for a replacement.
The EPS is unable to complete power-up diagnostics.	This generally indicates a hardware fault. One of the LEDs will be solid red for three seconds, followed by one second of another color.	Note the blinking LED and its color, then contact your dealer or Lantronix Technical Support. The EPS will not be operational until the fault is fixed.
The EPS completes its power-up and boot procedures, but there's no noticeable serial activity.	There is a problem with the serial connection or the set-up of the serial device.	Check the terminal setup and the physical connections, including the cable pinouts (see Appendix C). Try another serial device or cable, or cycle power on the EPS.
	A rapidly-blinking OK LED may signal boot failure.	Reboot the unit. When the EPS is running normally, the OK LED blinks every two seconds.

Table B-2: Power-up Problems and Error Messages, cont.

Problem/Message	Error	Remedy
The terminal shows a Boot> prompt rather than a Local> prompt.	The EPS is not connected properly to the Ethernet.	Ensure that the EPS is firmly connected to a functional and properly-terminated network node.
	The EPS Ethernet address is invalid.	The EPS Ethernet address is located on the bottom of the unit. Use the Change Hardware command to set the correct address, then reboot.
	Init Noboot command was entered.	See <i>Entering Commands at the Boot Prompt</i> on page B-6.
The EPS passes power-up diagnostics, but attempts to download new Flash ROM code from a network host.	If the OK LED blinks rapidly, the Flash ROM code may be corrupt.	Reboot the unit. If you get the same message, you will need to reload Flash ROM. See <i>Reloading Software on page D-2</i> .
	If you did not request a TFTP boot, the flash ROM code is corrupt. The unit will remain in boot mode.	

B.2 DHCP Troubleshooting

Table B-3: DHCP Troubleshooting

Area to Check	Explanation
DHCP is enabled on the EPS	Use the Set Server DHCP Enabled command. If you manually enter an IP address, DHCP is automatically disabled.
Make sure the DHCP server is operational.	Check to see that the DHCP server is on and is functioning correctly.
The EPS gets its IP address from the DHCP server	Refer to the DHCP Manager on your DHCP server for information about addresses in use. If the DHCP server doesn't list your EPS IP address, there may be a problem.

B.3 BOOTP Troubleshooting

If the BOOTP request is failing and you have configured your host to respond to the request, check these areas:

Table B-4: BOOTP Troubleshooting

Area to Check	Explanation
BOOTP is in your system's <code>/etc/services</code> file	BOOTP must be an uncommented line in <code>/etc/services</code> .
The EPS is in the loadhost's <code>/etc/hosts</code> file	The EPS must be in this file for the host to answer a BOOTP or TFTP request.
The download file is in the correct directory and is world-readable	The download file must be in the correct directory and world-readable. Specify the complete pathname for the download file in the BOOTP configuration file, or add a default pathname to the download filename.
The EPS and host are in the same IP network	Some hosts will not allow BOOTP replies across IP networks. Either use a host running a different operating system or put the EPS in the same IP network as the host.

B.4 RARP Troubleshooting

Table B-5: RARP Troubleshooting

Area to Check	Explanation
The EPS name and hardware address in the host's <code>/etc/ethers</code> file	The EPS name and hardware address must be in this file for the host to answer a RARP request.
The EPS name and IP address in the <code>/etc/hosts</code> file	The EPS name and IP address must be in this file for the host to answer a RARP request.
The operating system	Many operating systems do not start a RARP server at boot time. Check the host's RARPD documentation for details, or use the <code>ps</code> command to see if there is a RARPD process running.

B.5 Printing Problems

Table B-6: General Printing Problems

Area to Check	Explanation
Physical connections	To test a non-PostScript printer, use the Test Port EPS Count 100 command. This command will send 100 lines of test data out the parallel port so you can see if the printer is receiving data.
Service characteristics	Use the Show Service Local Characteristics command from the EPS Local> prompt to see if the desired service is available and to verify that the appropriate protocols are enabled on the service.
The IP address	The IP address must be unique on the network. Many problems can occur when there are duplicate IP addresses.
Queue Status and Port counters	Use the Monitor Queue command to ensure queue entries appear in the job list. Use the Monitor Port n Counters command to verify that the counter is incrementing with each job. If it is not, verify the connection between the EPS and the printer.

B.5.1 PostScript Problems

PostScript printers will silently abort jobs if they detect an error.

Table B-7: PostScript Troubleshooting

Area to Check	Explanation
The EPS is communicating with the printer	To test a PostScript printer, use the Test Port n PostScript Count 2 command. This command will send 2 pages of PostScript data out the parallel port. Watch the indicators on the printer to verify that the EPS is communicating with the printer. If the printer is capable of bidirectional communication, use the Test Service EPS_XXXXXX_PS PostScript Count 5 command. This will transfer data both to and from the printer. Autoselection must be disabled and the printer must be configured as a PostScript printer for this test to succeed.
The printer is configured to use 8-bit characters	If special characters or bitmaps are not printing correctly, the printer may be incorrectly configured to use 7-bit characters.

Table B-7: PostScript Troubleshooting, cont.

Area to Check	Explanation
Service Characteristics	Issue the Show Service Characteristics command. If the service rating is zero, the parallel port is in use. Verify that the PostScript characteristic and appropriate protocols have been enabled on the service.
Port Counters	If PostScript jobs appear to print but nothing comes out of the printer, verify the amount of data sent from the host. Issue the appropriate print command from the host system. After the job has completed, use the Show Port n Counters command. The bytes output value should be approximately 171 bytes greater than the size of the file on the host system. These numbers are only approximate, but will show that data is flowing to the printer.

B.5.2 Bitmap Graphics

If files that contain embedded bitmap graphics do not print correctly, it is probably because the bitmaps are being sent as actual binary data and binary data cannot be printed via serial or parallel interfaces.

Most major application packages have provisions to print using either **binary postscript** (for printers connected to the network via LocalTalk) or **hex postscript** (for printers connected to the network via a serial port or parallel port). If your application does not have this provision, ask the application vendor for an upgrade version or “patch” that will add the hex postscript function.

B.6 Entering Commands at the Boot Prompt

If the Boot> prompt appears on the serial console instead of the Local> prompt, one of two things may be wrong. Either the EPS does not have enough information to boot, or the network or flash boot has failed. If pressing the **Return** key does not display a prompt, press any other key. The Boot> prompt should appear.

If the EPS does not have enough information to boot, or the network or flash boot has failed, it will print a message to the console and wait ten seconds for serial port activity. If it detects serial port activity, it will continue booting provided the flash is good. However, if the user presses a key during that time period, the EPS will display the Boot> prompt.

Note: *If you see the message “Will attempt another download in x minutes,” press any key for the Boot> prompt.*

A series of commands called Boot Configuration Program (BCP) commands can be entered at the Boot> prompt to configure the EPS. These commands are a subset of the entire EPS command set. For example, a typical TCP/IP configuration might use the following commands:

Figure B-1: BCP Command Examples

```
Boot> Set IPADDRESS 192.0.1.229
Boot> Set SOFTWARE /tftpboot/EPS.SYS
Boot> Set LOADHOST 192.0.1.188
Boot> Set SECONDARY 192.0.1.22
Boot> FLASH
% Initialization begins in 5 seconds.....
```

These commands set the Server's address, the software loadfile, and the loadhost's IP address (as well as that of a backup loadhost). The server then reboots using the **Flash** command and will attempt to load the file EPS.SYS from the host at 192.0.1.188.

Flush NVR

This command is used to restore the EPS's non-volatile RAM to its factory default settings. It will reset everything that is configurable on the server, including the unit's IP address.

Flash

This command will force the EPS to download new operational code and reload it into Flash ROM. This is necessary when a new version of software is released and you wish to upgrade your unit. If the server cannot download the file, the code in Flash ROM will still be usable.

Help

Displays a one-page summary of available commands and what they do.

Init 451

Reboots the EPS after it has been configured. If the EPS can find and load the specified software loadfile, it will restart itself with full functionality. If the loadfile is not found, the server will attempt to reload continuously. If there is an error, or if the console's **Return** key is pressed, the EPS will re-enter the Boot Configuration Program.

Set BOOTP {Enabled, Disabled}

Enables or disables the sending of BOOTP queries during the boot sequence. It is enabled by default.

Set DHCP {Enabled, Disabled}

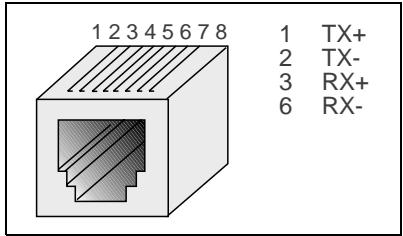
Enables or disables the sending of DHCP queries during the boot sequence. It is enabled by default.

Set Hardware xx-xx-xx	<p>Specifies the last three numbers of the server's Ethernet address. The first three numbers will be supplied automatically.</p> <p>The Ethernet address should have been set at the factory. Setting an incorrect address could cause serious network problems.</p>
Set IPAddress ip_address	<p>Specifies this server's IP address. Uses the standard numeric format.</p>
Set Loadhost ip_address	<p>Specifies the host to attempt to load the file from. The IP address should be in standard numeric format (no text names are allowed).</p>
Set RARP {Enabled, Disabled}	<p>Enables or disables the sending of RARP queries during the boot sequence. It is enabled by default.</p>
Set Secondary ip_address	<p>Specifies a backup loadhost. The IP address should be in standard numeric format (no text names are allowed). The backup loadhost will be queried if the primary host cannot load the server.</p>
Set Software filename	<p>Specifies the name of the file to load. The EPS will automatically add .SYS to the filename you specify. Note that all protocols must have a filename specified (either the default or set by the user). For more information, see <i>Appendix D</i>.</p> <p>TCP/IP users must use the Software option to specify the loadhost, the loadfile, and their own network address.</p> <p>TFTP users can specify a complete path name (up to 31 characters) if the file is located in a directory other than the default. The case of the filename must match that of the filename loaded onto the host computer.</p>
Show Server	<p>Use this command when issuing other commands to view the current EPS setup.</p>

C: Pinouts

C.1 Ethernet Connector

Figure C-1: RJ45 Ethernet Connector



C.2 Parallel Connectors

Lantronix uses standard Centronics parallel connectors.

For optimum performance of your EPS, Lantronix recommends the use of high quality parallel cables. Choose one of the following:

- ◆ A Lantronix parallel port cable, part number #500-011 (6 feet).
- ◆ Any other brand of **IEEE Std. 1284-1994** compliant cable. Compliant cables can easily be identified by the permanent label “IEEE Std. 1284-1994 compliant” printed on the cable.

Note: *Non-compliant cables have the same type of connectors but different electrical characteristics.*



D: Updating Software

D.1 Obtaining Software

Current software files (EPS.SYS) are available on the distribution CD. You can obtain software updates and release notes for the EPS from the Lantronix World Wide Web site (www.lantronix.com), or by using anonymous FTP through the Internet ([ftp.lantronix.com](ftp://ftp.lantronix.com)).

D.1.1 Via the Web

The latest version of EPS.SYS can be downloaded from the Lantronix Web site. At the time of this writing, the exact location of the files on the re-designed site was unknown.

Note: *As a result of Netscape Navigator's configuration, it may try to open the file as an ASCII text file. To avoid this, hold down the shift key when choosing the software file.*

D.1.2 Via FTP

The EPS software resides on the Lantronix FTP server ([ftp.lantronix.com](ftp://ftp.lantronix.com)). Most of these files are binary data, so the binary option must be used to transfer the files. All released files are in the **pub** directory. Always download the README file in the pub directory before downloading anything else; it contains a list of available software files.

To log into the FTP server, enter a username of **anonymous** and enter your full email address as the password. The following text will be displayed:

Figure D-1: Sample FTP Login

```
230-Welcome to the Lantronix FTP Server.
230-
230-IMPORTANT: Please get the README file before proceeding.
230-IMPORTANT: Set BINARY mode before transferring executables.
220-
230-Direct questions to support@lantronix.com or 800-422-7044 (US)
or 949-453-3990
230-
230 Guest login ok, access restrictions apply.
Remote system type is [your type will be displayed here].
ftp>
```

D.2 Reloading Software

The EPS stores software in Flash ROM to control the initialization process, operation, and command processing. The contents of Flash ROM can be updated by downloading a new version of the operational software via NetWare, TCP/IP, or MOP. Regardless of which protocol is used to update Flash ROM, the following points are important:

- ◆ The Flash ROM software file name, **EPS.SYS**, should not be changed.
- ◆ The download file should be world-readable on the host.
- ◆ There is a sixteen character length limit for the path name.
- ◆ There is a twelve character limit for the filename.
- ◆ Define commands must be used because Set configurations are cleared when the EPS boots. Use the **List Server Boot** command to check settings before rebooting.

Note: *It is important to check EPS settings before using the Initialize Reload command to ensure that you are reloading the correct software file.*

D.2.1 Reloading Sequence

If DHCP, BOOTP, or RARP is enabled on the EPS, the EPS will request assistance from a DHCP, BOOTP, or RARP server before starting the download attempts. The EPS will then try TFTP, NetWare, and MOP booting (in that order) provided that it has enough information to try each download method.

Downloading and rewriting the Flash ROM will take approximately two minutes from the time the **Initialize** command is issued. If the download file cannot be found or accessed, the EPS can be rebooted with the code still in Flash ROM. The OK/ACT LED will blink quickly while the EPS is booting (and reloading code) and then slowly when it returns to normal operation.

Note: *If you experience problems reloading Flash ROM, refer to Troubleshooting Flash ROM Updates on page D-4.*

D.2.1.1 TCP/IP

Before the EPS downloads the new software, it will send DHCP, BOOTP, and/or RARP queries (all are enabled by default). Next, the EPS will attempt to download the EPS.SYS file using TFTP (Trivial File Transfer Protocol).

Note: *EZWebCon can also be used to reload software.*

If a host provides DHCP, BOOTP, or RARP support, it can be used to set the EPS IP address (all methods) and loadhost information (BOOTP and RARP only).

Some BOOTP and TFTP implementations require a specific directory for the EPS.SYS file. See your host's documentation for instructions.

To manually configure the EPS IP parameters for software reload, use the following commands.

Figure D-2: Configuring TCP/IP Reload

```
Local> SET PRIVILEGED
Password> SYSTEM (not echoed)
Local>> DEFINE SERVER IPADDRESS nnn.nnn.nnn.nnn
Local>> DEFINE SERVER SOFTWARE "/tftpboot/EPS.SYS"
Local>> DEFINE SERVER LOADHOST nnn.nnn.nnn.nnn
Local>> LIST SERVER BOOT
Local>> INITIALIZE RELOAD
```

Note: *For instructions on how to log into the EPS to enter these commands, see the *Getting Started* chapter.*

The path and filename are case-sensitive and must be enclosed in quotation marks. When attempting to boot across an IP router, you must configure the router to proxy-ARP for the EPS, or use the bootgateway feature. For more information, see **Set/Define Bootgateway** in the *Commands* chapter of the *Print Server Reference Manual* located on the CD-ROM.

D.2.1.2 NetWare

The EPS.SYS file should be placed in the login directory on the NetWare file server. The EPS cannot actually log into the file server (since it knows no username/password); it can only access files in the login directory itself. On the EPS, specify the file server name, filename, and path.

Figure D-3: Configuring NetWare Reload

```
Local> SET PRIVILEGED
Password> SYSTEM (not echoed)
Local>> DEFINE SERVER NETWARE LOADHOST fileserver
Local>> DEFINE SERVER SOFTWARE SYS:\LOGIN\EPS.SYS
Local>> INITIALIZE RELOAD
```

D.2.1.3 MOP

The EPS.SYS filename is the only parameter that the EPS needs to reload via MOP. Make sure the service characteristic is enabled on the host's Ethernet circuit, copy the EPS.SYS file to the MOM\$LOAD directory, and reload the EPS using the **Initialize Reload** command. Be sure to use binary mode for the file transfer.

D.3 Troubleshooting Flash ROM Updates

Many of the problems that occur when updating the Flash ROM can be solved by completing the following steps:

Table D-1: Flash ROM Troubleshooting

Protocol	Area to Check
NetWare	Ensure the file is in the login directory. Since the EPS cannot actually log into the file server, it has very limited access to the server directories.
TFTP	<p>Check the file and directory permissions.</p> <p>Ensure the loadhost name and address are specified correctly and that their case matches that of the filenames on the host system.</p> <p>Ensure the file and pathnames are enclosed in quotes to preserve case.</p> <p>Ensure that TFTP is enabled on the host; several major UNIX vendors ship their systems with TFTP disabled by default.</p>
MOP	<p>The Ethernet circuit must have the service characteristic enabled.</p> <p>Ensure that the MOM\$LOAD search path includes the directory containing the EPS.SYS file.</p>

E: Specifications

E.1 Power Information

E.1.1 Power Requirements

Voltage:	110 V AC US, 220 V AC International
Frequency:	47-63 Hz
Operating Current:	0.8 Amp (maximum)
Power Consumption:	25 Watts
Fuse Rating	1.6A, 250 Volts

E.1.2 Power Supply Cord

Cord type:	3 conductors, 1.0 mm ² minimum conductor size (approximately 18 AWG)
Rated for:	250 Volts AC, 10 Amps
Length:	3.0 meters

E.2 Environmental Limitations

E.2.1 Temperature

Operating range:	0° to 50° C (32° to 122° F)
Storage range:	-40° to 66° C (-40° to 151° F)
Max temp. change/hr:	20° C (36° F)

Rapid temperature changes may affect operation. Therefore, do not operate the EPS near heating or cooling devices, large windows, or doors that open to the outdoors.

E.2.2 Altitude

Operating maximum: 2.4 km (8,000 ft)

Storage maximum: 9.1 km (30,000 ft)

If operating the EPS above 2.4 km (8000 ft.), decrease the operating temperature rating by 1° F for each 1000 ft.

E.2.3 Relative Humidity

Operating range: 10% to 90%, noncondensing (40% to 60% recommended)

Storage range: 10% to 90%, noncondensing

F: Frequently-used Commands

This appendix lists some of the most frequently-used commands of the Ethernet Print Server command set. More information about the command set, including additional options, can be found in the *Print Server Reference Manual* located on the CD-ROM.

F.1 Conventions

Please note the following before continuing:

- ◆ Commands are divided into Server (general), Port, and Protocol sections. Within each section, commands are listed alphabetically.
- ◆ Commands may require privileged user status. Enter **Set Privileged**, then enter the privileged password when prompted.
- ◆ When you enter a Define (or Purge) command, you must reboot the EPS for the command to take effect. Alternately, you can issue several Set commands and then a Save command to make the Set commands take effect without rebooting.
- ◆ When the abbreviated syntax “{**EN/DIS**}” is shown, you must choose either **Enabled** or **Disabled** to complete the command.

F.2 Server Commands

Table F-1: Frequently-used Server Commands

Command	Option(s)	Description
CONNECT option	servicename	Makes a connection to a LAT service.
	LOCAL num	Makes a connection to the specified local port.
	RLOGIN host	Makes an Rlogin connection to the specified host (text name or numeric IP address).
	TCP host	Makes a raw TCP connection to the specified host (text name or numeric IP address).
	TELNET host	Makes a Telnet connection to the specified host (text name or numeric IP address).
DEFINE SERVER BOOTP {EN/DIS}		Enables or disables querying for a BOOTP host at system boot time.
DEFINE SERVER DHCP {EN/DIS}		Enables or disables querying for a DHCP host at system boot time.
DEFINE SERVER GATEWAY ipaddr		Specifies the host to be used as a TCP/IP gateway to forward packets between networks. Enter an IP address.
DEFINE SERVER INCOMING option	BOTH	Enables incoming LAT and Telnet connections.
	LAT	Enables only incoming LAT connections.
	NONE	Disables incoming connections.
	TELNET	Enables only incoming Telnet connections.
	PASSWORD	Causes the EPS to prompt for a password for all incoming connections.
	NOPASSWORD	Allows connections to be established without prompting for a password.
DEFINE SERVER IPADDRESS ipaddr		Sets the EPS's network IP address.
DEFINE SERVER LOADHOST ipaddr		Specifies the TCP/IP host from which the EPS requests its run-time code.
DEFINE SERVER LOGIN PASSWORD		Sets a new password that will be required before incoming logins are accepted. You will be prompted for the new password (up to 6 alphanumeric characters, case-insensitive).
DEFINE SERVER NAME "newname"		Specifies a new name for the EPS. Names are restricted in length; generally a name of 11 or fewer characters is permissible.

Table F-1: Frequently-used Server Commands, cont.

Command	Option(s)	Description
DEFINE SERVER NETWARE LOADHOST server		Specifies the NetWare host from which the EPS requests its run-time code. Enter a file server name of up to 11 characters.
DEFINE SERVER PRIVILEGED PASSWORD		Sets a new password that will be required for privileged user status. You will be prompted for the new password (up to 6 alphanumeric characters, case-insensitive).
DEFINE SERVER RARP {EN/DIS}		Enables or disables querying for a RARP host at system boot time.
DEFINE SERVER SOFTWARE "filename"		Specifies the name or path (TCP) of the software download file. The filename can be up to 11 characters, and the pathname can be up to 26. The EPS will add a ".SYS" extension.
DEFINE SERVER SUBNET MASK ipmask		Specifies the subnet mask to be used for the EPS. The ipmask must be in n.n.n.n format.
HELP option	<nothing>	Displays a list of top-level (general) Help topics.
	<keyword>	Displays information about the keyword(s) entered. Multiple keywords must be specified in the order they occur in a command.
DEFINE SERVICE "name" PORT num		Creates a new service and associates it with the specified port.
DEFINE SERVICE "name" option	APPLETALK {EN/DIS}	Toggles whether the named service can be used to service networks running the specified protocol. RTEL applies to TCP/IP networks.
	LANMAN {EN/DIS}	
	LAT {EN/DIS}	
	NETWARE {EN/DIS}	
	RTEL {EN/DIS}	

Table F-1: Frequently-used Server Commands, cont.

Command	Option(s)	Description
DEFINE SERVICE “name” option	DLC {EN/DIS}	Specifies which service will handle print requests from DLC hosts. DLC can be enabled on one service per EPS.
	BANNER {EN/DIS}	When Enabled, causes the EPS to print a banner page before jobs.
	BINARY {EN/DIS}	When Enabled, the EPS will not process data passed through the service. This characteristic should be enabled when printing PCL data.
	EOJ string	Causes the EPS to send an end-of-job string to the attached device after every job. Enter an end string or the word none .
	FORMFEED {EN/DIS}	When Enabled, causes the EPS to append a formfeed to the end of LPR print jobs.
	POSTSCRIPT {EN/DIS}	When Enabled, causes the EPS to assume the attached device is a PostScript device and act accordingly.
	PS CONVERT {EN/DIS}	When Enabled, causes the EPS to place a PostScript wrapper around each job.
	SOJ string	Causes the EPS to send a start-of-job string to the attached device before every job. Enter a start string or the word none .
DEFINE SERVICE “name” option	TCP PORT string	Specifies a raw TCP listener socket for the service. Enter a socket number (4000 to 4999) or the word none .
	TELNET PORT string	Specifies a TCP listener socket for the service. Unlike TCP port, this option performs Telnet IAC interpretation on the data stream. Enter a socket number (4000 to 4999) or the word none .
INITIALIZE option	DELAY num	Schedules a reboot after num minutes. Enter a value from 0 to 120.
	CANCEL	Cancels an impending initialization.
	FACTORY	Reboots the EPS to its factory default settings.
	NOBOOT	Forces the EPS to stop in Boot Configuration Mode rather than fully rebooting.
	RELOAD	Forces the EPS to download new operational code and reprogram its flash-ROM.

Table F-1: Frequently-used Server Commands, cont.

Command	Option(s)	Description
LOGOUT option	<nothing>	Logs out the current port (the port that issued the command).
	PORT num	Logs out the specified port.
PURGE SERVICE option	LOCAL	Removes the definitions of all local services.
	“service”	Removes the definition of the specified service.
SET PRIVILEGED		Enters privileged mode, provided the user enters the proper privileged password when prompted.
{SHOW/MONITOR} QUEUE		Displays the status of EPS queues once (Show) or continually every three seconds (Monitor).
{SHOW/MONITOR} SERVER	<nothing>	Displays EPS information once (Show) or continually every three seconds (Monitor).
	COUNTERS	Displays characteristics related to the various counters kept by the EPS.
{SHOW/MONITOR} SERVICE option	<nothing>	Displays characteristics about all configured services once (Show) or continually every three seconds (Monitor).
	“service”	Displays only characteristics related to the named service.
ZERO COUNTERS option	ALL	Zeroes all port, node, and server counters.
	PORT num	Zeroes port counters for the specified port.

F.3 Port Commands

Table F-2: Port Commands

Command	Option(s)	Description
DEFINE PORT n ACCESS option	DYNAMIC	The port can initiate and receive connection requests.
	LOCAL	The port can initiate connection requests, and local logins are permitted.
	NONE	The port is unusable.
	REMOTE	The port can receive host-initiated connection requests.

Table F-2: Port Commands, cont.

Command	Option(s)	Description
DEFINE PORT n BITRONICS {EN/DIS}		When Enabled, ensures bidirectional functioning of the parallel port. The attached printer must also support Bitronics mode.
DEFINE PORT n CHARACTER size		Toggles the port between 7-bit and 8-bit characters (the default). Enter either 7 or 8 .
DEFINE PORT n DSRLOGOUT {EN/DIS}		When Enabled, the port will be logged out automatically whenever DSR is deasserted.
DEFINE PORT n DTRWAIT {EN/DIS}		When Enabled, the EPS will not assert DTR on the port when it is idle (no user logins or connections).
DEFINE PORT n FLOW option	CTS	Specifies CTS/RTS (hardware) flow control.
	{EN/DIS}	Activates or deactivates the currently-configured flow-control method.
	NONE	Removes the current flow control settings.
	XON	Specifies XON/XOFF (software) flow control.
DEFINE PORT n NAME "newname"		Enter a name of up to 16 alphanumeric characters for the specified port.
DEFINE PORT n PARITY option	parity	Enter even , odd , mark , or space . Specifying mark or space will change the character size to 7 bits.
	NONE	Specifies that no parity will be used (the default).
DEFINE PORT n SPEED baudnum		Sets the port's baud rate. Acceptable baudnum values range from 300 to baud.
{SHOW/MONITOR} PORT n		Displays the port's configuration characteristics once (Show) or continually every three seconds (Monitor). Counters and Status keywords can be added.
TEST PORT n option	COUNT rows WIDTH cols	Sends an ASCII data stream to the port for the specified number of rows and/or columns.
	POSTSCRIPT	Sends a PostScript test page to the port.

F.4 Protocol Commands

In the following table, **PROTO** is an abbreviation for the optional keyword **PROTOCOL**.

Table F-3: Protocol Commands

Command	Option(s)	Description
DEFINE PROTO APPLETALK option	{EN/DIS}	Enables or Disables the AppleTalk protocol for the EPS.
	ZONE newzone	Places the EPS in a zone other than the default.
DEFINE PROTO IP option	{EN/DIS}	Enables or Disables the TCP/IP protocol for the EPS.
	GATEWAY ipaddr	See DEFINE SERVER GATEWAY ipaddr.
	IPADDRESS ipaddr	See DEFINE SERVER IPADDRESS ipaddr.
	LOADHOST ipaddr	See DEFINE SERVER LOADHOST ipaddr.
	NAMESERVER ipaddr	Specifies the IP address of the host that will resolve text host names into their numeric equivalents for TCP/IP connection attempts.
DEFINE PROTO LANMAN option	{EN/DIS}	Enables or Disables the LAN Manager protocol for the EPS.
DEFINE PROTO LAT option	{EN/DIS}	Enables or Disables the LAT protocol for the EPS.
	LICENSE string	Enables LAT on multi-port EPS's. Enter the license string obtained from Lantronix.
DEFINE PROTO NETWARE option	{EN/DIS}	Enables or Disables the NetWare (IPX) protocol for the EPS.
	DSCONTEXT string	Configures the NetWare Directory Services context in which the EPS is located. For more information about NDS contexts, see your NDS documentation.
	DSLICENSE string	Configures the NetWare Directory Services license needed to enable NDS on your EPS. Enter the license string obtained from Lantronix.
	DSTREE string	Configures the NetWare Directory Services tree in which the EPS is located. For more information about NDS trees, see your NDS documentation.

Table F-3: Protocol Commands, cont.

Command	Option(s)	Description
DEFINE PROTO NETWARE ENCAPSULATION option {EN/DIS}	NATIVE	Configures the EPS to use the “native mode” frame format.
	ETHER_II	Configures the EPS to use Ethernet v2 frame format.
	802_2	Configures the EPS to use 802.2 frame format with NetWare SAPs.
	SNAP	Configures the EPS to use 802.2 frame format with SNAP SAPs.
DEFINE PROTO NETWARE LOADHOST server		See DEFINE SERVER NETWARE LOADHOST server.
PURGE IPSECURITY option	ALL	Removes the entire IP security table.
	ipaddress	Removes entries from the IP security table that are related to the specified IP address.
PURGE PROTO NET- WARE ACCESS option	ALL	Removes all entries from the NetWare access list.
	server	Removes entries from the NetWare access list that are related to the specified file server.
{SHOW/MONITOR} PROTO protocolname		Displays operating characteristics of the specified protocol.

Warranty Statement

Lantronix warrants for a period of FIVE years from the date of shipment that each EPS1 and EPS2 Ethernet Print Server supplied shall be free from defects in material and workmanship. During this period, if the customer experiences difficulties with a product and is unable to resolve the problem by phone with Lantronix Technical Support, a Return Material Authorization (RMA) will be issued. Following receipt of a RMA number, the customer is responsible for returning the product to Lantronix, freight prepaid. Lantronix, upon verification of warranty will, at its option, repair or replace the product in question, and return it to the customer freight prepaid. No services are handled at the customer's site under this warranty.

Lantronix warrants software for a period of sixty (60) days from the date of shipment that each software package supplied shall be free from defects and shall operate according to Lantronix specifications. Any software revisions required hereunder cover supply of distribution media only and do not cover, or include, any installation. The customer is responsible for return of media to Lantronix and Lantronix for freight associated with replacement media being returned to the customer.

Lantronix shall have no obligation to make repairs or to cause replacement required through normal wear and tear of necessitated in whole or in part by catastrophe, fault or negligence of the user, improper or unauthorized use of the Product, or use of the Product in such a manner for which it was not designed, or by causes external to the Product, such as, but not limited to, power or failure of air conditioning.

There are no understandings, agreements, representations or warranties, express or implied, including warranties of merchantability or fitness for a particular purpose, other than those specifically set out above or by any existing contract between the parties. Any such contract states the entire obligation of Lantronix. The contents of this document shall not become part of or modify any prior or existing agreement, commitment or relationship

The information, recommendation, description and safety notations in this or other documents supplied by Lantronix are based on general industry experience and judgment with respect to such hardware and software. THIS INFORMATION SHOULD NOT BE CONSIDERED TO BE ALL INCLUSIVE OR COVERING ALL CONTINGENCIES. NO OTHER WARRANTIES, EXPRESS OR IMPLIED, INCLUDING WARRANTIES OF FITNESS FOR A PARTICULAR PURPOSE OR MERCHANTABILITY, OR WARRANTIES ARISING FROM COURSE OF DEALING OR USAGE OF TRADE, ARE MADE REGARDING THE INFORMATION, RECOMMENDATIONS, DESCRIPTIONS AND SAFETY NOTATIONS CONTAINED HEREBY AND IN HARDWARE AND SOFTWARE SPECIFICATION DOCUMENTATION, OR INSTRUCTIONS SUPPLIED BY Lantronix. In no event will Lantronix be responsible to the user in contract, in tort (including negligence), strict liability or otherwise for any special, indirect, incidental or consequential damage or loss of equipment, plant or power system, cost of capital, loss of profits or revenues, cost of replacement power, additional expenses in the use of existing software, hardware, equipment or facilities, or claims against the user by its employees or customers resulting from the use of the information, recommendations, descriptions and safety notations supplied by Lantronix. Lantronix liability is limited (at its election) to (1) refund of buyer's purchase price for such affected products (without interest); (2) repair of such products, or (3) replacement of such products, provided however, that the buyer follows the procedures set forth herein

Warranty claims must be received by Lantronix within the applicable warranty period. A replaced product, or part thereof, shall become the property of Lantronix and shall be returned to Lantronix at the Purchaser's expense. **All return material must be accompanied by a return material authorization number assigned by Lantronix.**



Declaration of Conformity

(according to ISO/IEC Guide 22 and EN 45014)

**Manufacturer's
Name & Address:**

Lantronix
15353 Barranca Parkway, Irvine, CA 92618 USA

Declares that the product:

Product Name: Print Server

**Model
Name/Number:**

EPS1
EPS2

Conforms to the following standards or other normative documents:

Safety: EN60950:1988+A1, A2

**Electromagnetic
Emissions:**

EN55022: 1998 (CISPR 22, Class A: 1993, A1: 1995, A2: 1996)
IEC 1000-3-2/A14: 2000
IEC 1000-3-3: 1994

**Electromagnetic
Immunity:**

EN55024: 1998 Information Technology Equipment-Immunity
Characteristics
IEC 6100-4-2: 1995 Electro-Static Discharge Test
IEC 6100-4-3: 1996 Radiated Immunity Field Test
IEC 6100-4-4: 1995 Electrical Fast Transient Test
IEC 6100-4-5: 1995 Power Supply Surge Test
IEC 6100-4-6: 1996 Conducted Immunity Test
IEC 6100-4-8: 1993 Magnetic Field Test
IEC 6100-4-11: 1994 Voltage Dips & Interrupts Test

(L.V.D. Directive 73/23/EEC)

**Supplementary
Information:**

*The product complies with the requirements of the
Low Voltage Directive 72/23/EEC and the EMC Directive 89/336/
EEC.*

Warning: *This is a Class A product. In a domestic environment,
this product may cause radio interference in which case the user
may be required to take adequate measures.*

**Manufacturer's
Contact:**

Director of Quality Assurance, Lantronix
15353 Barranca Parkway, Irvine, CA 92618 USA

General Tel: 949/453-3990
Fax: 949/453-3995



Index

Symbols

/etc/hosts 4-2

Numerics

10BASE-T 2-1, 2-4

A

Access list, NetWare 5-2

ACT LED B-1

AppleTalk 3-2, 7-1–7-2

Chooser 7-1

Configuration 7-1

Router 7-1

Troubleshooting 7-2

Zones 7-1, 7-2

Application port, LAT 6-1

ARP table 4-2

AUI 2-1, 2-4

B

Back panel 2-1

Banner 4-3, 4-11

BCP (Boot Configuration Program)

B-7

Bindery 5-1

Bitmap graphics troubleshooting B-6

Bitronics 3-2, 7-1

Boot prompt B-1, B-6

BOOT sequence 2-4

BOOTP 4-1, 4-3, 5-5, D-2

Troubleshooting B-4

Bottom label 2-1

C

Cables C-1

Centronics 7-1, C-1

Chooser (Macintosh) 7-1

CLI (Command Line Interface) 4-1,
4-3

Commands F-1–F-8

Configuration

AppleTalk 7-1

DIP switches 2-1

Initial setup 3-1

LAT 6-1

NetWare 5-1

TCP/IP 4-1

Console terminal 3-2

Contact information A-1

D

DB25 2-1

Default service 3-2

Defaults, restoring B-7

DHCP 4-3, B-3, B-7, D-2

Troubleshooting B-3

Digital Network Port 8-1

DIP switches 2-1, 2-3

Displaying current settings B-8

DOS 4-2

Download file B-4

E

Error codes, LAT 6-2

Ethernet

Address B-8

Ethernet address 4-2

Locating on Server 2-1

Ethernet connector C-1

EtherTalk 7-1

EZWebCon 3-1, 4-1, 5-1, 6-1, 7-1, 8-

1

F

Factory defaults B-7
 Filters, input/output 4-4
 Flash B-1, D-2
 Troubleshooting D-4
 Updates B-2, D-2
 Flash ROM B-3
 Reloading B-7
 Flush NVR B-7
 Front panel 2-1
 FTP 3-1, D-1

H

Hardware address 4-2, B-4, B-8

I

Incoming logins 3-1
 Installation 2-3
 Introduction 1-1
 IP address 3-1, 4-1, 4-7, 5-1, 6-1, 7-1, 8-1, B-1, B-4
 Configuring 4-1, B-8
 Configuring via BOOTP 4-3
 Configuring via command line 4-3
 Configuring via DHCP 4-3
 Configuring via Ping 4-1
 Configuring via RARP 4-3
 IPX (NetWare) 5-1-5-4

J

Java 3-1

L

LAN Manager 3-2, 8-1-8-2
 Lantronix
 Contact information A-1

Technical support 5-1, A-1
 Web site 5-1

LAT 3-2, 6-1

Application port 6-1
 Error codes 6-2
 Printing to port 6-1
 Printing to service 6-1
 Queue 6-1
 Troubleshooting 6-2

LEDs 2-2, B-1, B-2

Loadfile B-8

Loadhost B-8

Local prompt B-3

Local> prompt 3-2, 4-1

LocalTalk 7-1

Logins

 Incoming 3-1
 Password 3-1, 3-2
 Remote console 3-1
 Service 3-2

lpc 4-11

LPD 4-8, 7-1, 8-1

LPR 4-3, 4-8

 AIX 4-8

 HP 4-9

 Print command 4-8

 SCO Unix 4-10

 UNIX (Generic) 4-7

 Windows NT 4-4

lpstat 4-11

M

Macintosh 7-1

 Chooser 7-1

 EtherTalk 7-1

 LocalTalk 7-1

 OS 8.1 and LPD 7-1

 Zones 7-2

MOP

 Reloading software D-3

N

- Named pipe interface 4-4
- Nameserver 4-2
- NDPS 5-1
- NDS 5-1
 - Directory service context 5-2
 - Directory service tree 5-2
 - License 5-1, 5-2
- NetWare 3-2, 5-1–5-4
 - Access list 5-2
 - Administrator 5-1, 5-2
 - Bindery 5-1
 - NDS 5-1, 5-2
 - PCONSOLE 5-3
 - Reloading software D-3
 - Troubleshooting 5-4
- NVRAM B-7

O

- OK LED 2-2

P

- Parallel port 2-1, C-1
 - Service 3-2
- Passwords
 - Login 3-1, 3-2
 - Privileged 3-1, F-1
- PCONSOLE 5-1, 5-3
- Ping 4-1
- Pinouts C-1
- Ports
 - Parallel 2-1, C-1
 - Serial 2-1
- PostScript 7-1
 - Troubleshooting B-5
- Power
 - Connector 2-1
 - Cord E-1
 - Specifications E-1

Supplying 2-4

- Troubleshooting B-1
- Power-up troubleshooting B-2
- Print pipe 4-11
- Print queue 3-2, 4-4, 4-9, 4-10, 5-3,
6-1, 8-2
- Print troubleshooting B-5
- Printcap file 4-11
- Printing a test page 2-4
- Printing to a queue 4-8, 4-9, 6-1
- Privileged password 3-1, F-1
- Problem report procedure A-1
- Product description 2-1
- Prompt, Local> 3-2
- Prompts
 - Boot B-1, B-6
 - Local B-3
- Protocols 1-1
 - AppleTalk 3-2, 7-1
 - LAN Manager 3-2
 - LAT 3-2, 6-1
 - NetWare 3-2, 5-1
 - TCP/IP 3-2, 4-1
- Protocols supported 1-1
- PWR LED 2-2

Q

- QINST 5-1
- Queue 1-1, 3-2, 4-4, 4-9, 4-10, 5-1,
5-2, 5-3, 6-1, 8-2

R

- RARP 4-1, 4-3, B-4, B-8, D-2
 - RARPD process B-4
 - Troubleshooting B-4
- Rebooting B-7
- Reloading software B-7, D-2
 - MOP D-3
 - NetWare D-3

TCP/IP D-2

- Remote console logins 3-1
- Remote printer 3-2
- Remote queue 3-2
- Reset/Test button 2-4
- Restoring defaults B-7
- RJ45 2-1, C-1
- RTEL 4-3, 4-4, 4-11

S

- SAM 4-9
- Serial LED 2-2
- Serial port 2-1
 - Service 3-2
- Server 3-1
 - Name, changing 3-2
 - Name, default 2-1, 4-11
- Service 3-1, 3-2, 5-3, 7-1
 - Default 3-2
 - Name 4-11
- Service announcements (LAT) 3-2
- SMIT 4-8
- Software file B-4, D-2
- Software updates D-1
 - FTP D-1
 - Web D-1
- Specifications E-1
 - Altitude E-2
 - Environmental E-1
 - Power E-1
 - Relative Humidity E-2
 - Temperature E-1
- Spooling directory 4-4
- Supplying power 2-4
- System Administration Mgr (SAM) 4-9
- System Mgmt Interface Tool (SMIT) 4-8

T

- TCP/IP 3-2, 4-1–4-12, 8-1, B-1
 - Reloading software D-2
- Telnet 3-2, 4-2, 4-12
- Test page 2-4
- Test/Reset button 2-4
- TFTP D-2
- Top panel 2-2
- Troubleshooting B-1–B-8
 - AppleTalk 7-2
 - Bitmap graphics B-6
 - BOOTP B-4
 - DHCP B-3
 - Flash (software) updates D-4
 - LAT 6-2
 - NetWare 5-4
 - PostScript B-5
 - Power-up B-1, B-2
 - Printing B-5
 - RARP B-4
 - Unix 4-12

U

- UNIX named pipe interface 4-11
- Updating software D-1

V

- VMS 6-2

W

- Windows 4-2, 4-3, 8-1

Z

- Zones, AppleTalk 7-1, 7-2